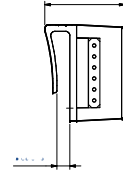
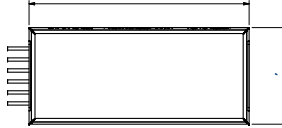
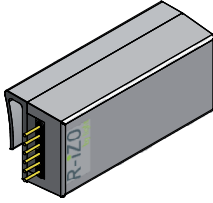


LIGHT MODULE



data sheet light module - item no. 101113



displays the material containers and the required quantity. The sensor is located on top which recognises and controls the access to the containers.

FUNCTION

display for access sequences
display number of pieces
sensor
display function - sequences
display function - error
installation

RGB LED
cube display (6 points)
without need of touch
controls the access to the containers in sequences
visuell red light
with barcodes and a scanner

BUILDUP

fitting
connection
composition

can be stucked on 3-4 mm material
connector-plug-system
one connection module can be attached to a maximum of 20 light modules

TECHNICAL LAYOUT

storable assamly groups
chain of modules

150 pieces per module
a chain of connected light- and bridging modules must not be longer than 6000 mm or 20 light modules. If a longer chain of modules is needed, please attach another connecting module.

GENERAL DATA

dimensions
chassis
range of sensor
power supply
ambient temperature work station
relative air humidity

50mm x 22mm x 19mm
polycarbonate
nearly 90mm
9 Volt DC, external power supply
0°C to 50°C
10% to 60% rLF

