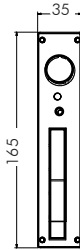
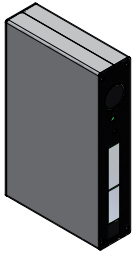


data sheet basic module - item no. 101116



The basic module is the electrical power supply for the light modules. The seven access points or in the back of the module. It is no storage medium or a data processor. It has a integrated serial interface RS232 and can be triggered by a scanner or a system like for example SAP.

TECHNISCHE AUSSTATTUNG

serial interface

I/O port

input

output

scanner connection

CAN-adapter; RS232

exists

6 access points

1 exit point, if not necessary, can be used as

aces point

serial RS232 - 1D or 2D scanner possible

BUILDUP

fitting

connection

composition

base

exchange of CAN informations over the

connection module

one connection module supports 20 light modules

GENERAL DATA

dimensions

chassis

power supply

ambient temperature work station

relative air humidity

35mm x 165mm x 105mm

aluminium anodized

9 Volt DC, external power supply

0°C bis 50°C

10% bis 60% rLF

